

MODIFICATION RECOMMENDED –
CORRECTS MANUFACTURING OR DESIGN DEFECTS

J2127A-07

S E R V I C E N O T E

Supersedes:
None

AGILENT J2127A Transmission Test Set

Serial Numbers: GB27000487, 488, 489, 490, 491, 493, 495, 496

Possible damage tracks caused by wrongly fitted stand-off.

To Be Performed By: Agilent-Qualified Personnel

Parts Required:

J1413-00025 Polycarbonate Tape

ADMINISTRATIVE INFORMATION

SERVICE NOTE CLASSIFICATION:			
MODIFICATION RECOMMENDED			
ACTION CATEGORY:	<input checked="" type="checkbox"/> IMMEDIATELY <input type="checkbox"/> ON SPECIFIED FAILURE <input type="checkbox"/> AGREEABLE TIME	STANDARDS:	LABOR: 2.0 Hours
LOCATION CATEGORY:	<input type="checkbox"/> CUSTOMER INSTALLABLE <input type="checkbox"/> ON-SITE <input checked="" type="checkbox"/> SERVICE CENTER	SERVICE INVENTORY:	<input type="checkbox"/> RETURN <input type="checkbox"/> SCRAP <input type="checkbox"/> SEE TEXT <input type="checkbox"/> SEE TEXT
TEXT		USED PARTS:	<input type="checkbox"/> RETURN <input type="checkbox"/> SCRAP <input type="checkbox"/> SEE <input type="checkbox"/> SEE TEXT
AVAILABILITY:	PRODUCT'S SUPPORT LIFE	AGILENT RESPONSIBLE UNTIL: February 2004	
AUTHOR: JH	PRODUCT LINE: PY		
ADDITIONAL INFORMATION:			

© AGILENT TECHNOLOGIES, INC. 2002
PRINTED IN U.S.A.



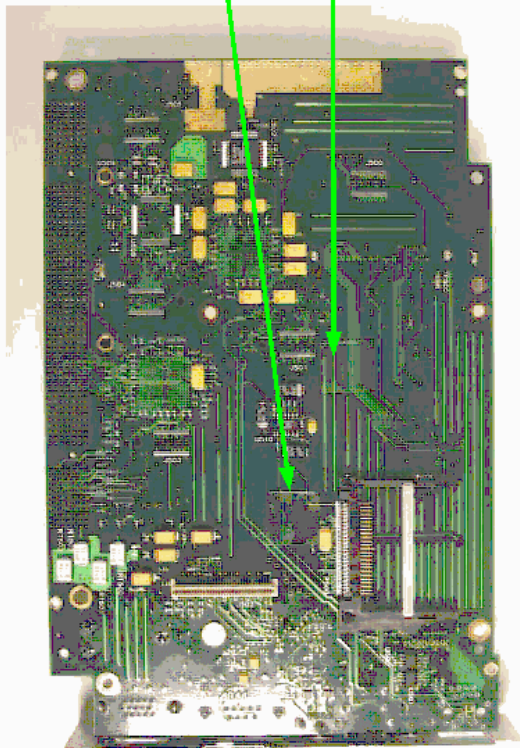
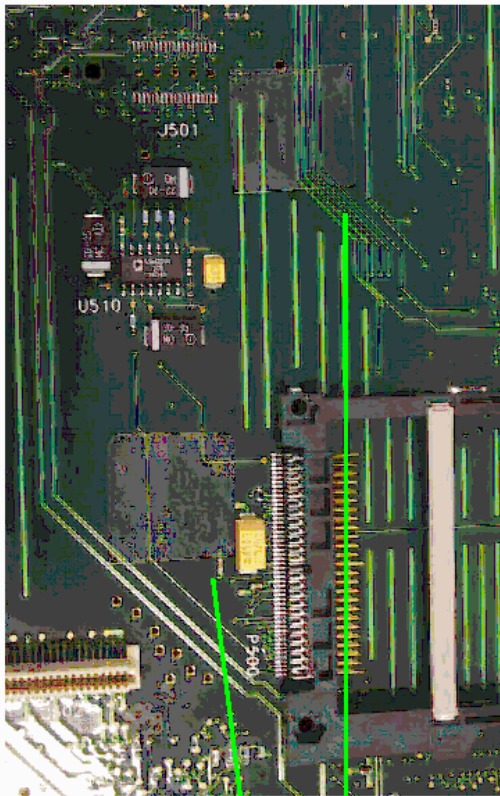
May 31, 2002

Situation:

Due to a design problem on the Control Assembly (J1413-65001), a stand-off has been fitted over tracks on the Processor Assembly (J1413-65002). Vibration may cause the stand-off to damage the tracks (which go to the flash card) and this may cause the instrument to fail on boot-up.

Solution/Action:

The Control Assembly should be dismantled and the affected tracks on the Processor Assembly should be protected with polycarbonate tape. Refer to Figure 1 for the location of the polycarbonate tape.



**CUT SLIDE INSERTS J1413-00026 TO MAKE 4
POLYCARBONATE SQUARES AS SHOWN
STICK SQUARES TO UNDERSIDE OF BOARD AS
SHOWN BELOW.**

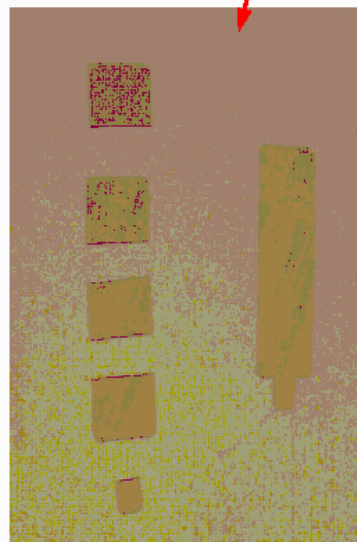


Figure 1 Location of the Polycarbonate Squares